



INTELLIGENT SYSTEMS FOR BETTER MACHINES

INTRO

HISTORY

MANAGEMENT
BOARD

WORLDWIDE

EMPLOYEES

SALES

RANGE OF
BUSINESS

KNOW-HOW

PRODUCTS

MARKETS &
SOLUTIONS

+40 YEARS OF EXPERIENCE IN MOBILE AUTOMATION

- ✓ Made in Germany
- ✓ Positioned internationally
- ✓ Certified quality management
- ✓ Expertise and know-how
- ✓ High qualified employees
- ✓ Effective production processes
- ✓ Modern technologies and products



MOBA HISTORY

Navigation

PART 1/3



1972

Foundation
Engineering
Office
Paul Harms



1985

MOBA
Electronic s.r.l.,
Italy



Foundation
MOBA GmbH



1990

Foundation
MOBA Dresden
GmbH



1994

Foundation
MOBA Data
GmbH



1998

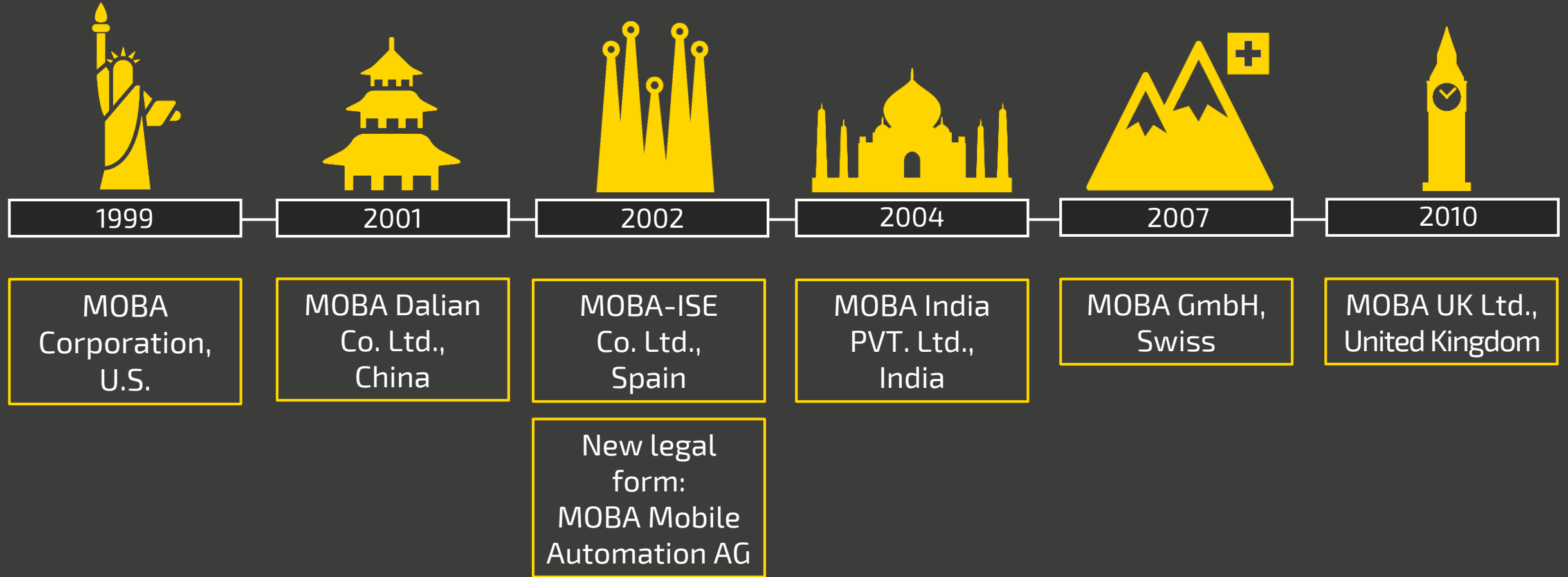
MOBA France



MOBA HISTORY

Navigation

PART 2/3



MOBA HISTORY

Navigation

PART 3/3



2011

Interest in
NOVATRON Oy
Finland



2012

MOBA turns
40!



2013

MOBA
Merenberg



2013

Interest in
NOVATRON
MCS AB
Sweden



2014

Ground-
breaking
Ceremony of a
new Truck Hall



2015

MOBA do Brasil,
Brazil

Holding
Interest in
Volz
Consulting
GmbH





from left to right

Dr. Holger Barthel

Executive Officer Manufacturing & Logistics

Ing. MBA David Shelstad

Executive Officer International Sales

Dipl. Ing. Alfons Horn

Executive Officer Development

Dipl. Kfm. Volker Harms

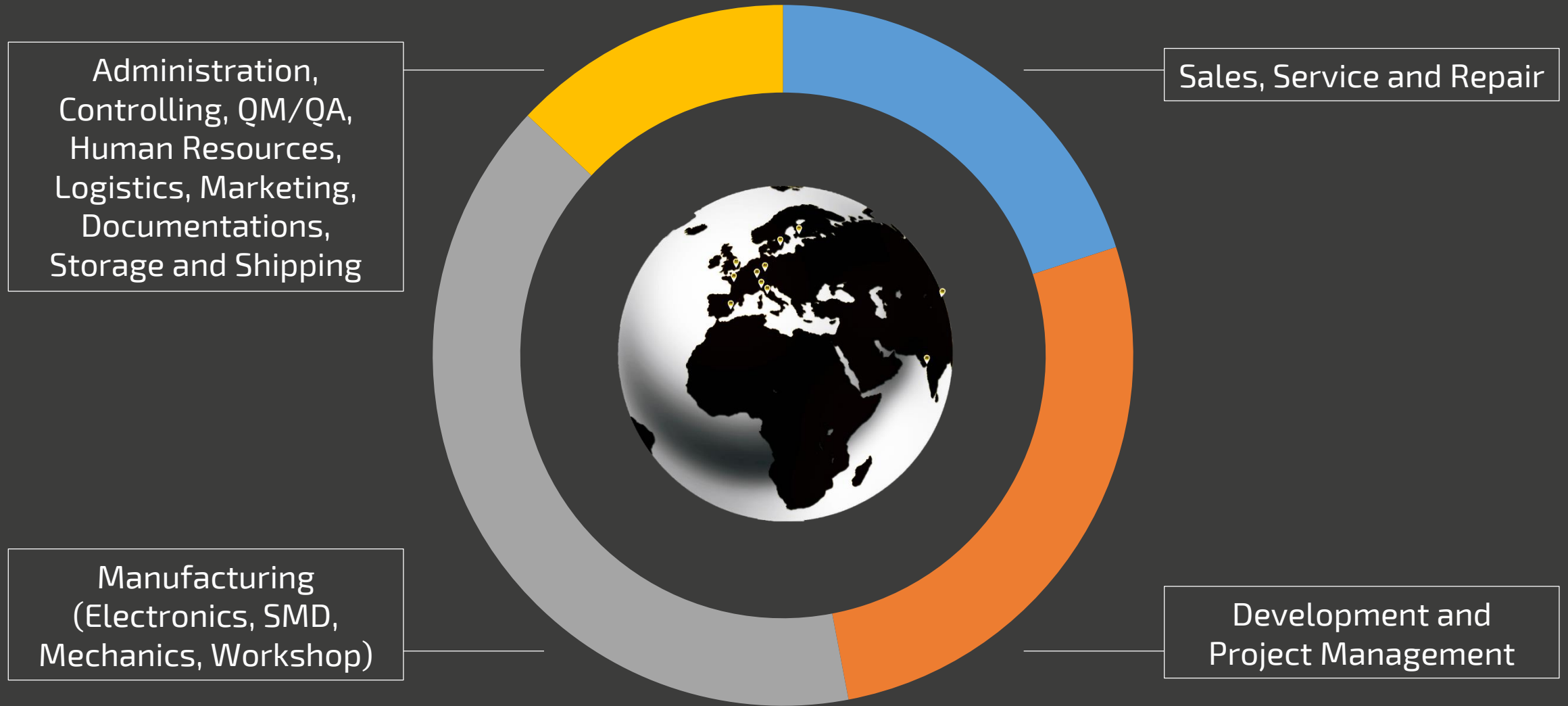
President & CEO

MOBA WORLDWIDE

Navigation

CLICK ON A YELLOW POINT TO GET MORE INFORMATION ABOUT SUBSIDIARIES

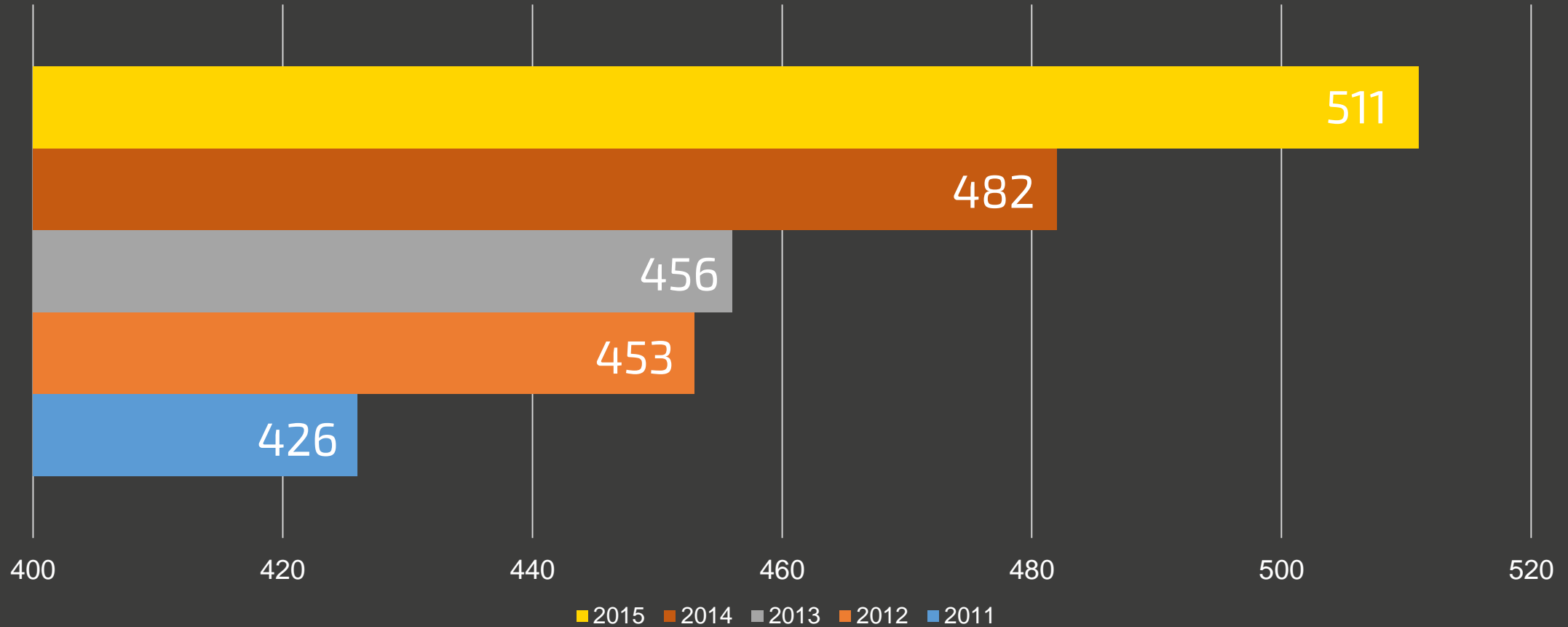




MOBA EMPLOYEES

WORLDWIDE

Navigation



MOBA APPRENTICES

≡ Navigation

80% HIRING RATIO

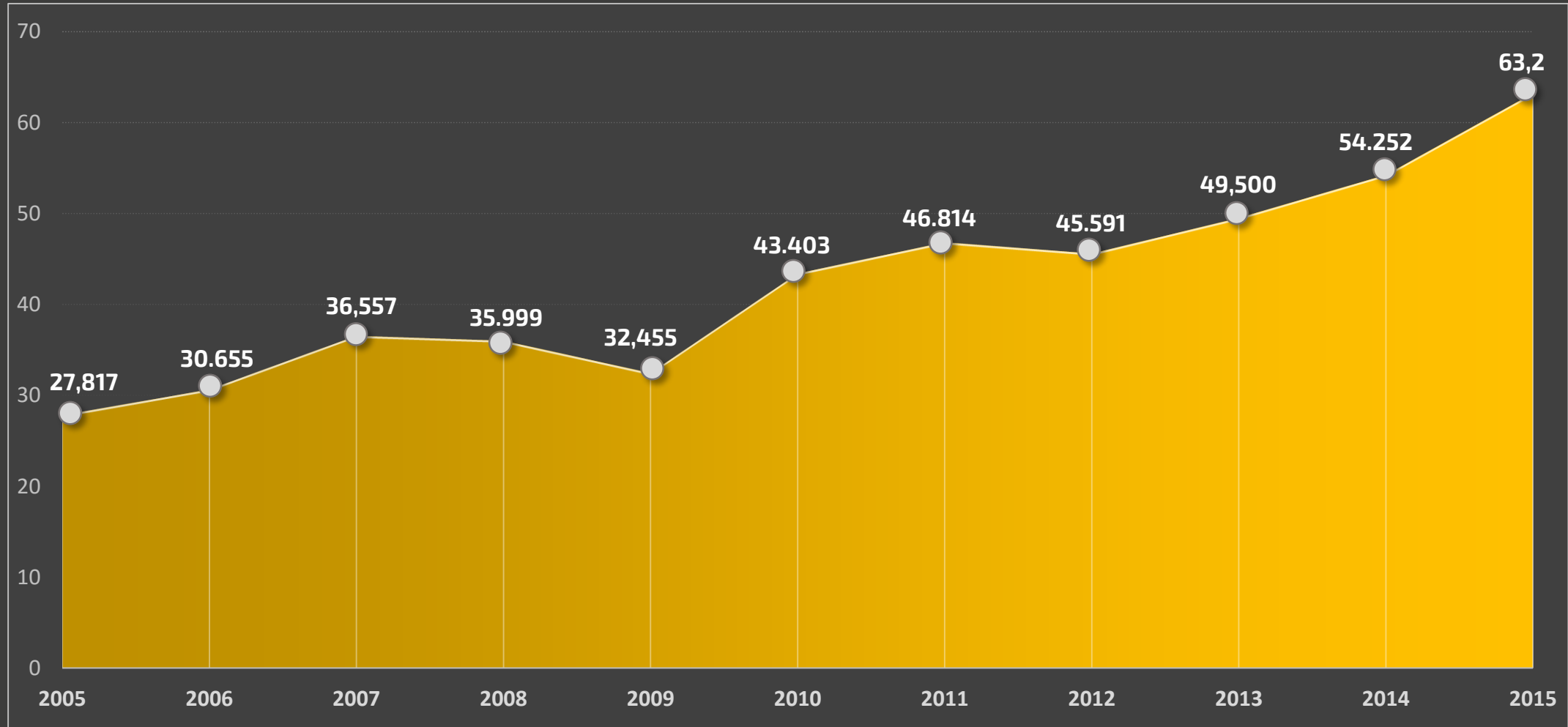
AT MORE THAN 60 APPRENTICES SINCE 1986

- ✓ Own training center
- ✓ Qualified, expert and competent vocational training
- ✓ Perfect start into working life
- ✓ Support of personal skills
- ✓ Completely equipped workplace for every apprentice
- ✓ Training program after qualification

SALES

Navigation

MOBA GROUP: IN MILLION EURO



MOBA BUSINESS RANGE

CONSTRUCTION / LAND LEVELING – WASTE / LOGISTICS

≡ Navigation



79.9 %

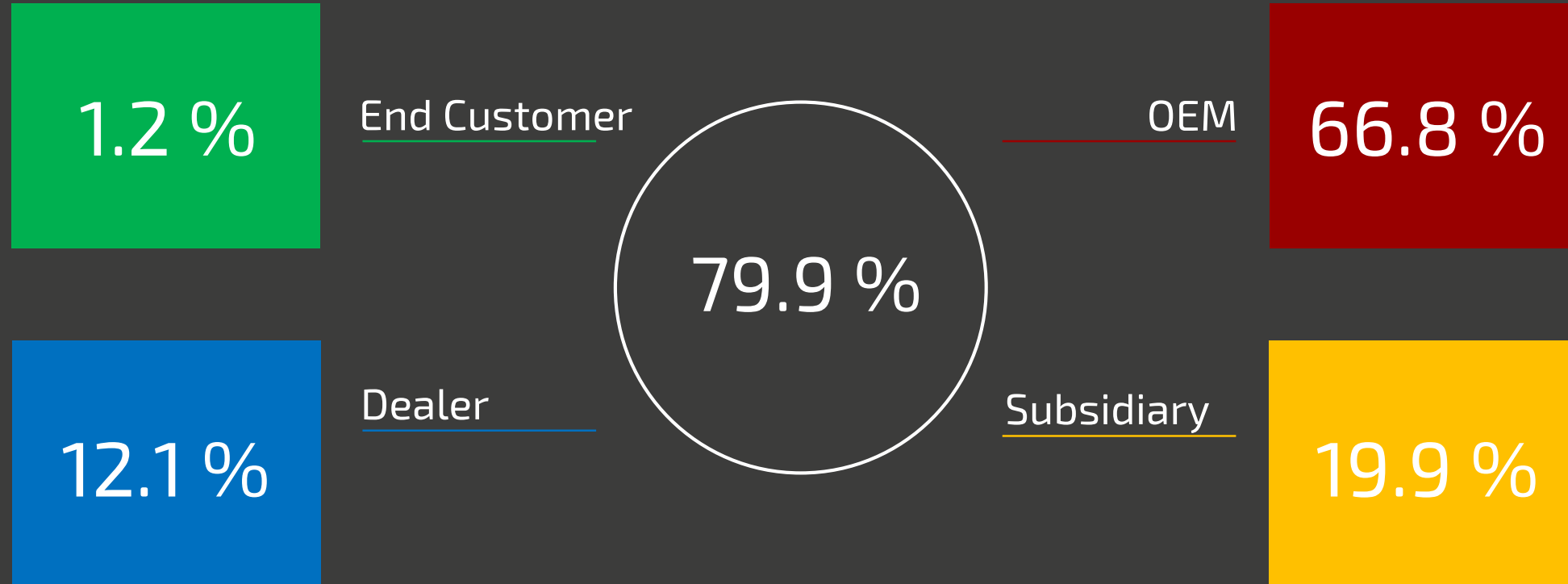


20.1 %

MOBA BUSINESS RANGE

Navigation

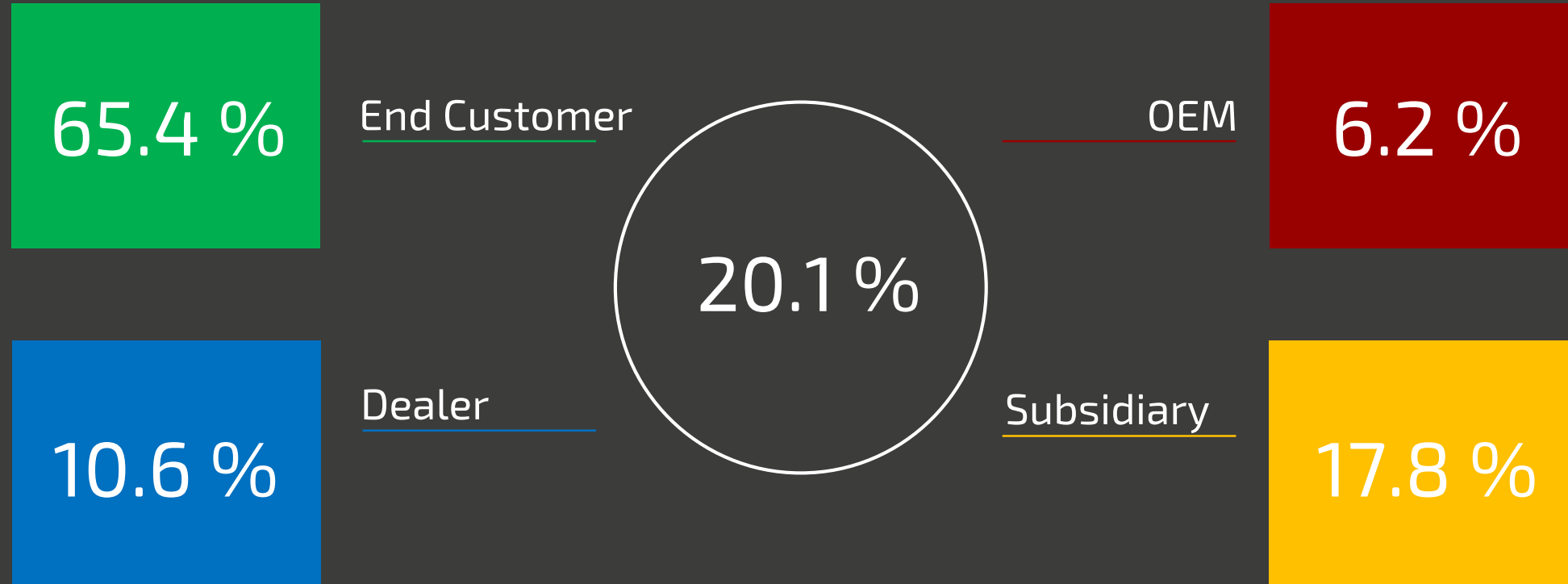
CONSTRUCTION / LAND LEVELING – SALES BREAKDOWN



MOBA BUSINESS RANGE

Navigation

WASTE / LOGISTICS – SALES BREAKDOWN



MOBA KNOW-HOW

SPECIALIST FOR HMIS, SOFTWARE, SENSORS & CONTROLLERS

≡ Navigation

21 TRADE MARK RIGHTS

WITH MORE THAN 100 INNOVATIONS

- 5 German patents
- 5 German utility patents
- 6 European patents
- 4 U.S. patents
- 1 Chinese patent



MOBA KNOW-HOW

SPECIALIST FOR HMIS, SOFTWARE, SENSORS & CONTROLLERS

≡ Navigation

+100 DEVELOPMENT ENGINEERS

ARE WORKING FOR MOBA WORLDWIDE

+40 YEARS OF APPLICATION KNOW-HOW

CHARACTERIZE MOBA AS A PIONEER IN MOBILE AUTOMATION TECHNOLOGY

+40 YEARS OF MANUFACTURING KNOW-HOW

IN USING PRODUCTS UNDER HARSH CONDITIONS



SPECIALIST FOR HMIS, SOFTWARE, SENSORS & CONTROLLERS

NEW AND FURTHER DEVELOPMENT

OF MODERN TECHNOLOGIES LIKE:

- ✓ Ultrasonics
- ✓ Slope sensors
- ✓ Feed control
- ✓ Positioning
- ✓ Laser
- ✓ GNSS
- ✓ 3D-Technology
- ✓ Processor technology
- ✓ Weighing sensors
- ✓ RFID
- ✓ Joystick development
- ✓ Programming
- ✓ Visualization
- ✓ Software
- ✓ Telematics
- ✓ In-house development and manufacturing processes
- ✓ Pooling company know-how
- ✓ Maximum possible paving depth
- ✓ Own circuit board equipment
- ✓ Potting of electronic components

MOBA: DEVELOPING A PRODUCT

≡ Navigation



Project Engineering

Purposeful,
efficient, cost-
effective
project
engineering



Coordination

Coordination
between
different
departments



Development Team

Assemble
development
team



Production

Coordination
with
manufacturing
department



Agreement Customer

Constant
contact with
our customer



Field tests

Field tests

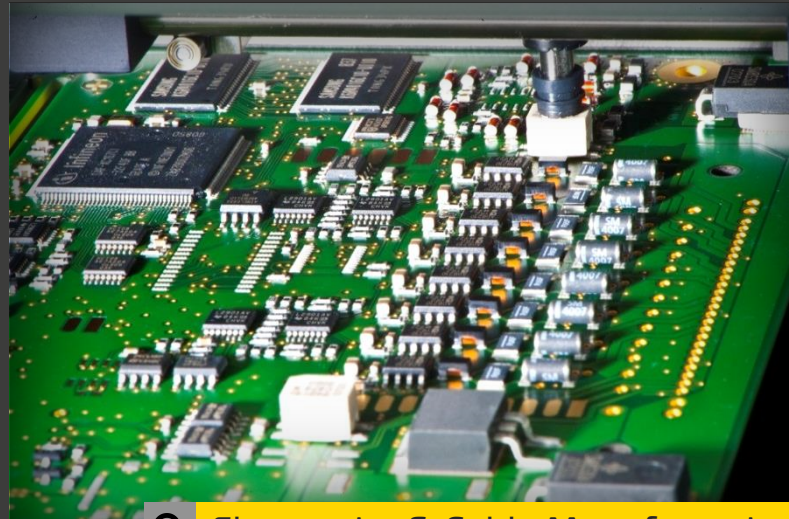
MOBA KNOW-HOW

Navigation

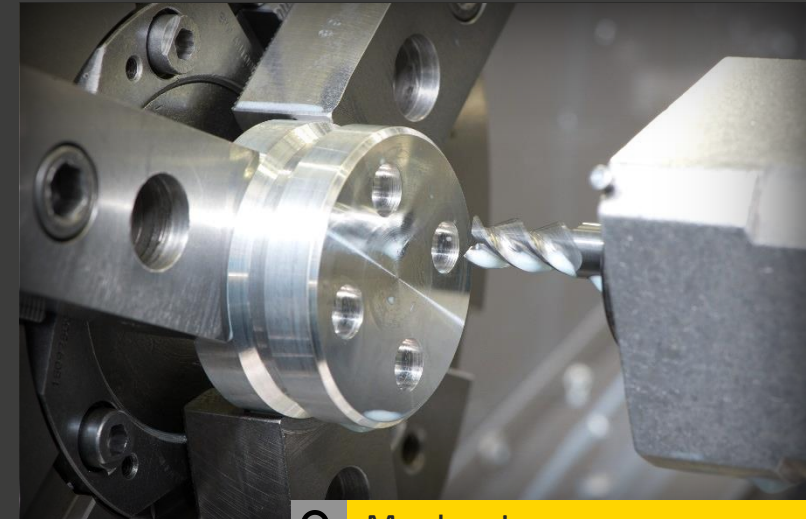
CIRCUIT BOARD EQUIPMENT – ELECTRONIC-& CABLE MANUFACTURING – MECHANICS



Q Circuit Board Equipment



Q Electronic- & Cable Manufacturing



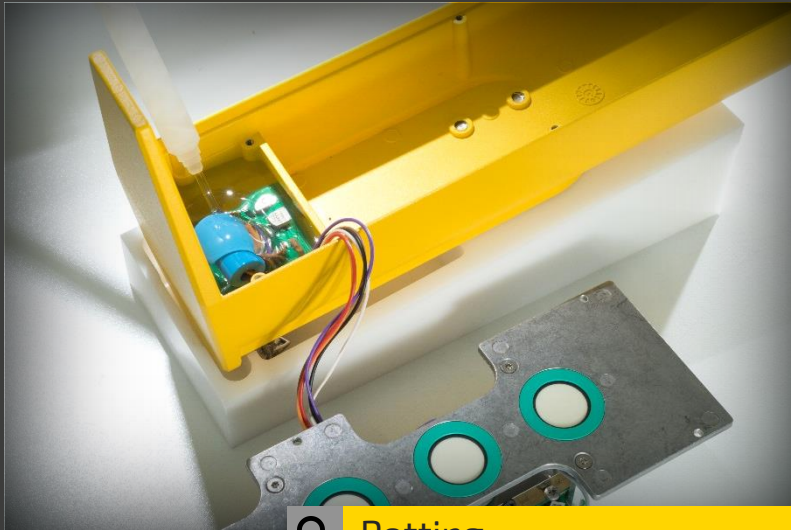
Q Mechanics



MOBA KNOW-HOW

Navigation

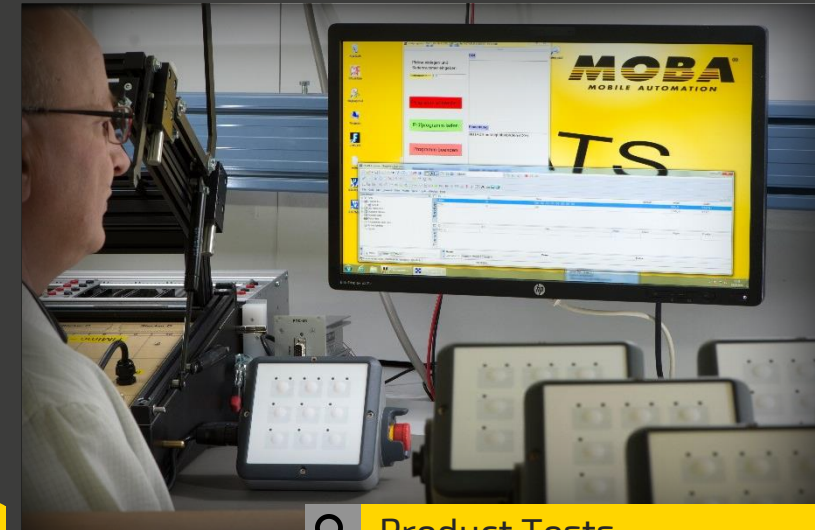
POTTING – DISPLAY & FOIL MANUFACTURING – PRODUCT TESTS



Q Potting



Q Display & Foil Manufacturing



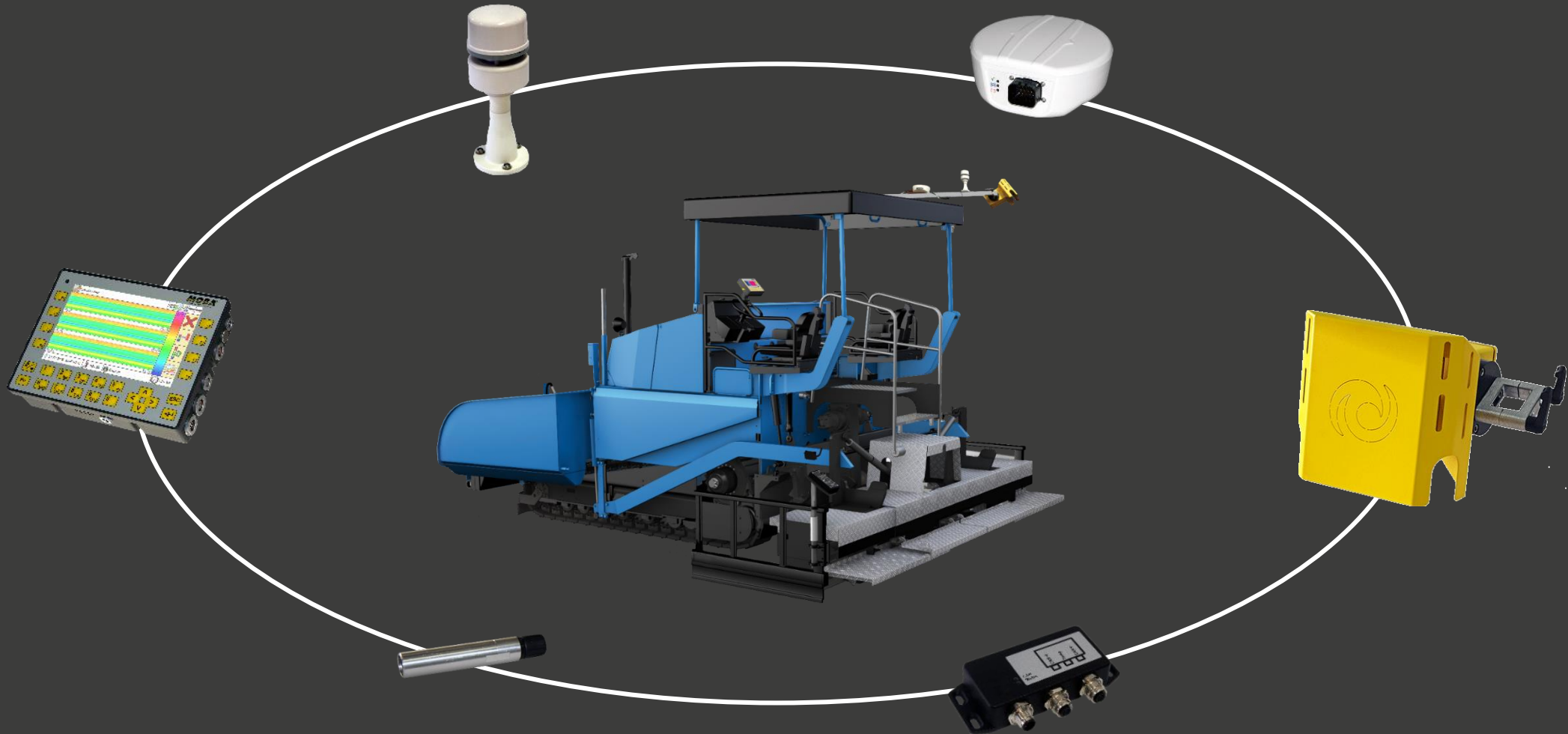
Q Product Tests



MOBA PRODUCTS & SYSTEMS

Navigation

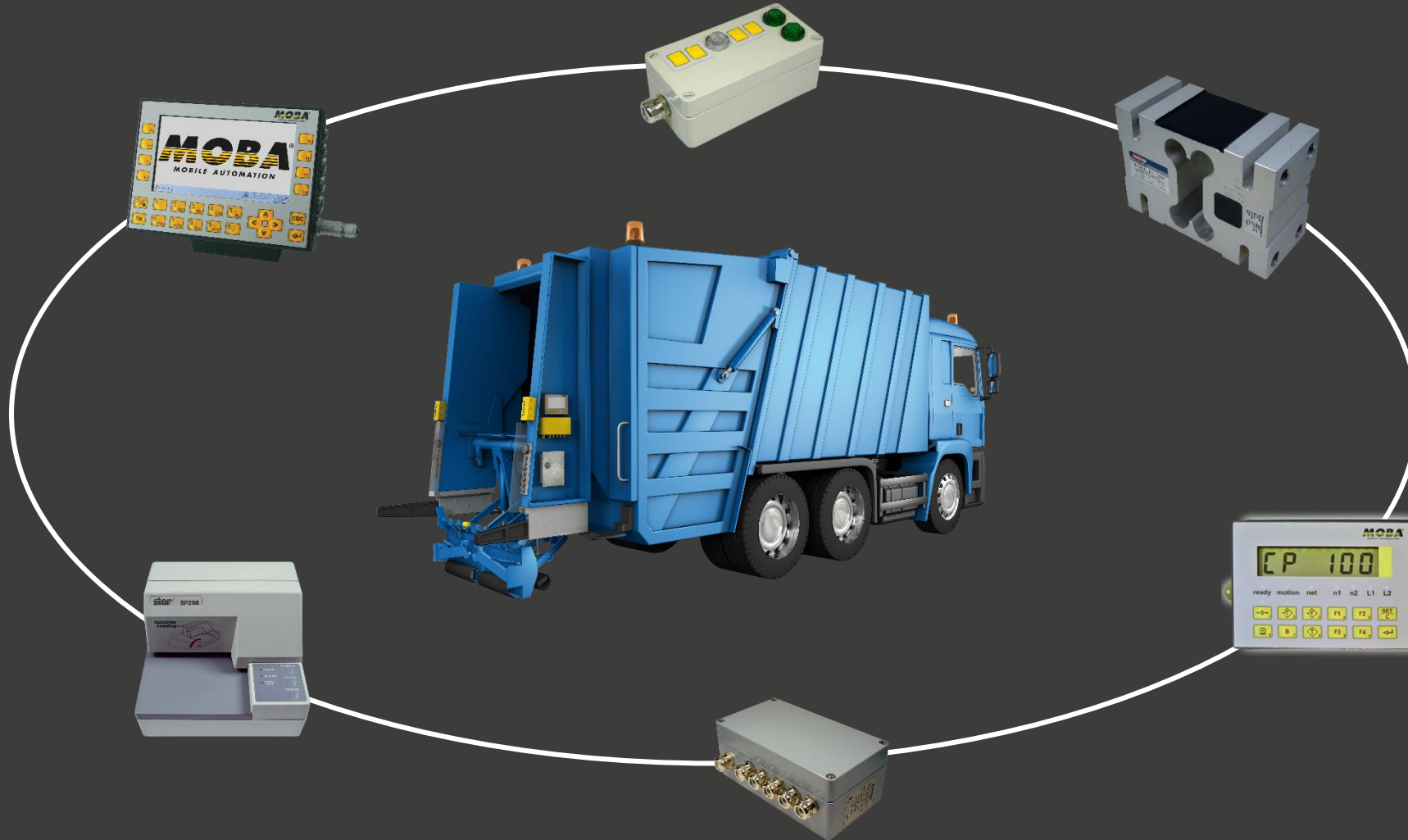
OPTION 1: COMPLETE SYSTEM OUT OF SINGLE PRODUCTS / CONSTRUCTION



MOBA PRODUCTS & SYSTEMS

Navigation

OPTION 2: COMPLETE SYSTEM OUT OF SINGLE PRODUCTS / WASTE



Navigation

The diagram illustrates a complete electronic system for a truck-mounted crane. At the center is a blue truck with a crane arm. Surrounding the truck are several electronic components connected by a circular white line, representing a closed-loop system. The components include:

- A multi-pin connector (top left).
- A small display unit (top center).
- A larger display unit (top right).
- A joystick controller (right).
- A metal box (bottom right).
- A multi-pin connector (bottom center).
- A metal box (bottom left).
- Two yellow sensor units (left).

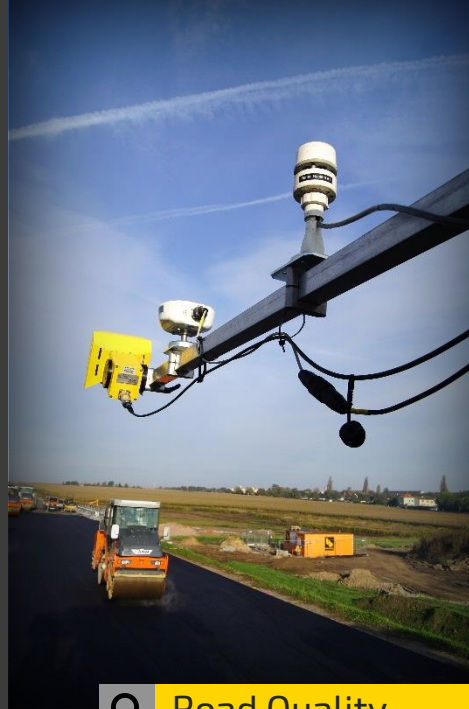


ROAD CONSTRUCTION & EARTH WORKS

≡ Navigation



Q Road Construction



Q Road Quality



Q Earth Works

CRANES & AERIAL WORK PLATFORMS

Navigation



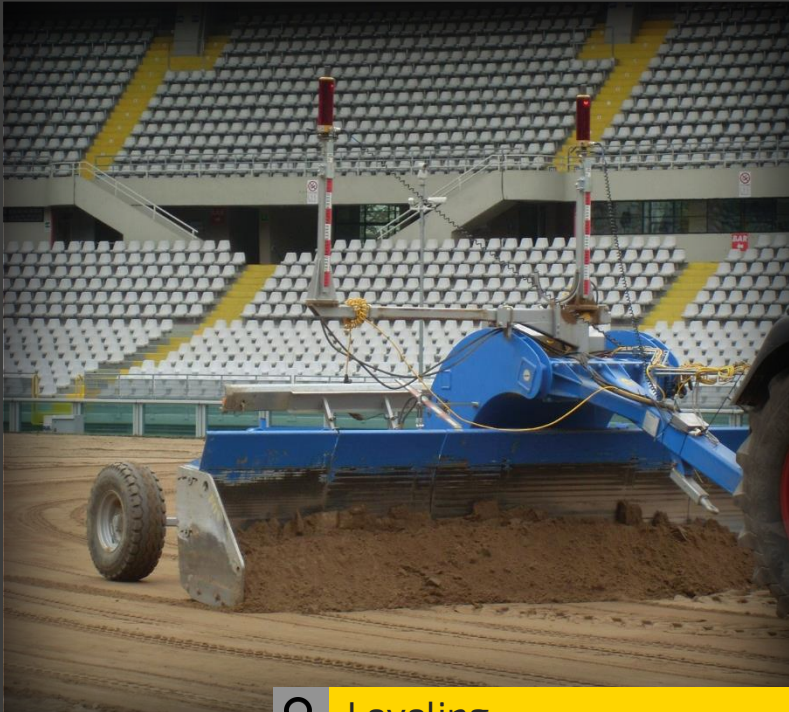
Q Cranes & Lifters



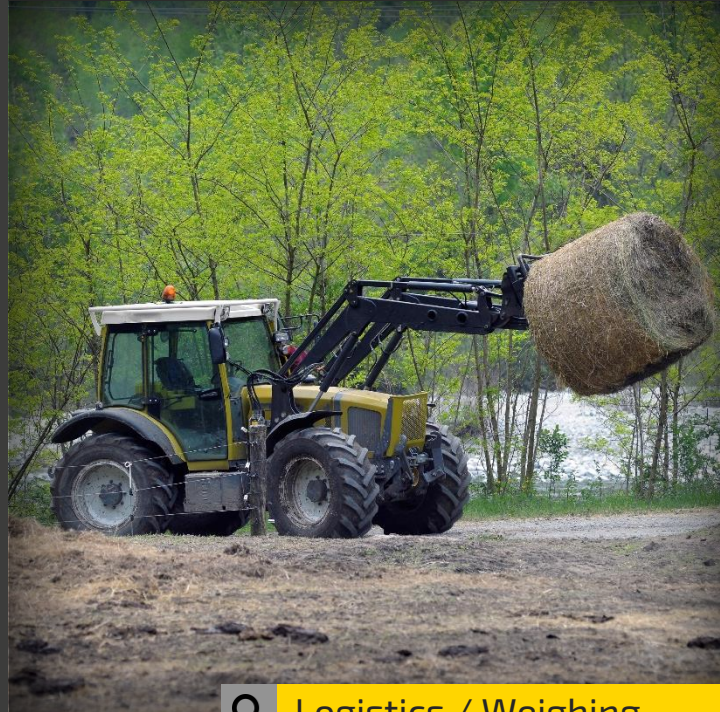
Q Logistics



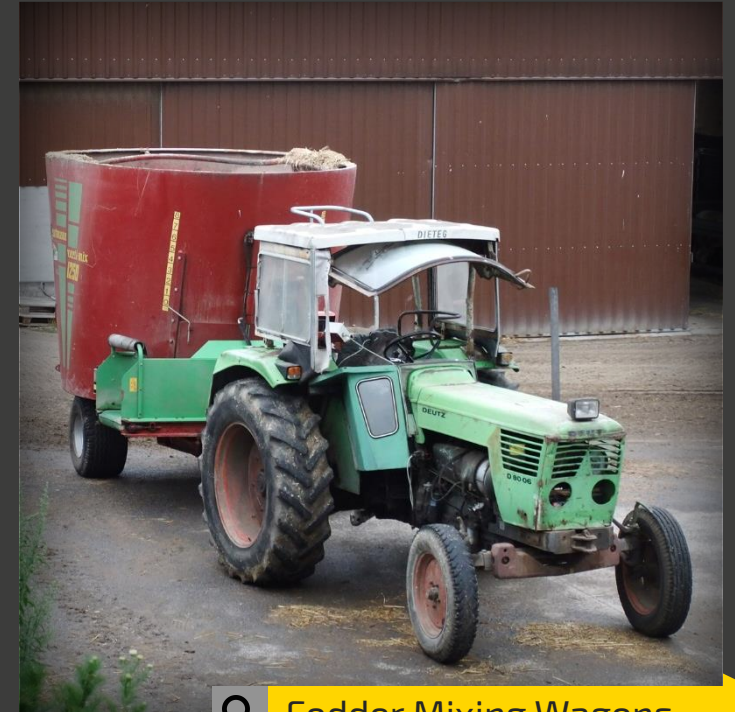
Q Others



Q Leveling



Q Logistics / Weighing



Q Fodder Mixing Wagons

WASTE MANAGEMENT LOGISTICS

≡ Navigation



Q Weighing



Q Identification



Q Telematics & Software



CURRENT PROJECTS

Navigation

NEW TOP LAYER FOR A RUNWAY AT THE AIRPORT ROME / PAVE-IR SCAN



CURRENT PROJECTS

≡ Navigation

EARTH WORKS AT SPORTS FIELDS IN FREUDENSTADT (GERMANY) / MOBA 3D-MATIC & GS-506



CURRENT PROJECTS

Navigation

NEW HIGHWAY TRACK SECTION WITH BPO ASPHALT / PAVE-IR SCAN



CURRENT PROJECTS

Navigation

ROAD CONSTRUCTION AT A MINE IN BRAZIL / MOBA 3D-MATIC & GS-506



CURRENT PROJECTS

WASTE IDENTIFICATION IN RIAD / RFID

Navigation



Thank you for your attention.

Please visit our new website or follow us on our social media channels.

www.moba-automation.com

www.mobacommunity.com





Your contact person:
Markus J. Schmitt

Marketing Communications
mschmitt@moba.de



© 2016